

DONT FLUSH THE WIPES



Do not flush wipes, diapers, or anything else besides human waste and toilet paper.

Cornell Cooperative Extension of Rockland County

Copy and paste into caption:

Flushable Wipes (such as personal hygiene, baby and cosmetic wipes) do not break down in the sewer system and cause untreated sewer backups when they stick to grease in the line or get stuck in smaller pipe joints.

Check out @CCERockland short video :
<https://www.youtube.com/watch?v=mLhrad9XM98>

#stormwater #water #drainage #stormwatermanagement
#plumbing #wastewater #sustainability #pollution
#cleanwater #waterquality #watertreatment
#greeninfrastructure #climatechange #blockeddrain
#drainer #sewer #environment #watermanagement
#waterpollution

When it rains, stormwater carries all the pollutants on the ground such as trash, road salt, motor oil, lawn chemicals and pet waste to storm drains (also called the 'Inlet') which lead to nearby streams, creeks, lakes, and rivers.



Call Rockland County Department of Environmental Resources at (845) 364-2670 to pick up storm drain markers and adhesive for your community.

Copy and Paste in Caption:

Catch basins in Rockland County do not lead to treatment plants, but instead lead directly to local waterways, therefore dumping will not 'take away' your problem, but will impact your health, your drinking water supply, and your local water recreation activities.

Learn more at:

<http://rocklandcce.org/stormwater-consortium-water-quality-education>

#stormwater #water #drainage
#stormwatermanagement #plumbing
#wastewater #sustainability #pollution
#cleanwater #waterquality
#watertreatment #greeninfrastructure
#climatechange #blockeddrain #drainer
#sewer #environment
#watermanagement #waterpollution



If you see a
construction site
with sediment
leaving the site or
draining to the catch
basin which will also
cause clogging,
report this at once to
your municipality .

Cornell Cooperative Extension of Rockland County

Copy and Paste into Caption:

Clogged storm drains from illicit dumping can cause **local flooding onto your property**. Contact the [Rockland County Solid Waste Management Authority](#) for disposal of all items not accepted by pick-up.

#stormwater #water #drainage
#stormwatermanagement #wastewater
#sustainability #pollution #cleanwater
#waterquality #watertreatment
#greeninfrastructure #climatechange
#blockedrain #drainer #sewer
#environment #watermanagement
#waterpollution



Before buying lawn fertilizer, check the bag for a set of three numbers showing the percentage of nitrogen, phosphorus and potassium. Buy a bag with a "0" in the middle.

Many of Rockland County's waterways are suffering from harmful algae blooms, which is one of the nation's most widespread and costly environmental and public health challenges (EPA)



Copy and paste in the caption:

This occurs when *excess* nutrients, predominantly **Nitrogen and Phosphorus**, enter our waterways mostly from human activity where naturally-occurring algae gobble them up and multiply to high "bloom" levels. **Algae blooms** starve the water of oxygen (a condition known as 'hypoxia'), causing fish and shellfish die-offs.

Learn more at:

<http://rocklandcce.org/stormwater-consortium-water-quality-education/our-lawns-and-algae-harmful-algae-blooms>

#stormwater #water #drainage
#stormwatermanagement #toxicalgae
#wastewater #sustainability #pollution
#cleanwater #waterquality #watertreatment
#greeninfrastructure #climatechange
#blockeddrain #drainer #sewer #environment
#watermanagement #waterpollution

Keep storm drains clear!

Cornell Cooperative Extension Rockland County



Copy and paste into caption:

Stormwater runoff is a major source of contamination in the Nation's waterbodies. It is therefore very important to never dump to storm drains and keep your community clean of trash and pollution. Always keep storm drains clear to avoid flooding around your property.

Get more involved in keeping our waterways safe at:
<http://rocklandcce.org/stormwater-consortium-water-quality-education/environmental-volunteer-opportunities>

#stormwater #water #drainage
#stormwatermanagement #plumbing
#wastewater #sustainability #pollution
#cleanwater #waterquality
#watertreatment #greeninfrastructure
#climatechange #blockeddrain
#drainer #sewer #environment
#watermanagement #waterpollution

**Veolia
residential
customers
get a \$25 rain
barrel!**

Cornell Cooperative Extension of Rockland County



Copy and Paste into Caption:

Veolia customers receive a \$50.00 rebate which can be purchased at the Cornell Cooperative Extension Rockland.

#stormwater #water #drainage
#stormwatermanagement #wastewater
#sustainability #pollution #cleanwater
#waterquality #watertreatment
#greeninfrastructure #climatechange
#environment #watermanagement
#waterpollution

Sanitary Sewer Overflows



Sanitary Sewer Overflows (SSOs) are **discharges of untreated sewage** from the sewer line that overflow into the street, to our local waters, and even to the **lower levels of your home or basement!**

SSOs mostly occur during heavy rain and are **often caused by 'flushable' wipes** that cause blockages in the lines. Thousands of tax dollars are spent each year cleaning out sewer lines to prevent SSOs. **To prevent SSOs near you, never flush wipes, or wash fat, oil or grease down the drain.**



Cornell Cooperative Extension of Rockland County

Copy and paste in caption

NEVER flush wipes or sanitary products down the toilet. This blocks the sewer lines and could potentially cost you THOUSANDS of the dollars!

Learn more at :

<http://rocklandcce.org/stormwater-consortium-water-quality-education/flushable-wipes>

#stormwater #water #drainage
#stormwatermanagement #plumbing
#wastewater #sustainability #pollution
#cleanwater #waterquality
#watertreatment #greeninfrastructure
#climatechange #blockeddrain #drainer
#sewer #environment
#watermanagement #waterpollution

Help the Rockland County Storm Drain Marking Program!

Why Storm Drain Markers?

Many people believe that the storm drain will carry waste to a sewage treatment plant for cleanup. Not true! Every storm drain in Rockland County carries rain water into the nearest stream, lake, wetland, river or reservoir.

Every day people knowingly or unknowingly pour wastes such as used motor oil, hazardous chemicals, pesticides, pet waste, paints and antifreeze into storm drains. Leaves, yard waste, litter and dirt from the road are also thrown into the drains by our neighbors who do not realize they are damaging water quality. Storm Drain Markers help to prevent this!

Call Rockland County Department of Environmental Resources at (845) 364-2670 to pick up storm drain markers and adhesive for your community.

Cornell Cooperative Extension of Rockland County



Copy and paste to caption:

Keep your storm drains clean and ensure a safer, cleaner future for our waterways!

#stormwater #water #drainage
#stormwatermanagement #plumbing #wastewater
#sustainability #pollution #cleanwater #waterquality
#watertreatment #greeninfrastructure #climatechange
#blockeddrain #drainer #sewer #environment
#watermanagement #waterpollution

What is an Illicit Discharge?

DUMPING OF ANY KIND TO THE STORM DRAIN IS ILLEGAL!



An illicit discharge is something in the storm sewer system that is not entirely storm water.

Examples of Illicit Discharges are illicit sewer-line connections and dumping of any kind which most frequently includes motor oil, grease from commercial sites, household toxics, pet waste, trash and more.

Call Rockland County Department of Environmental Resources at (845)364-2670 to pick up storm drain markers and adhesive for your community

Cornell Cooperative Extension of Rockland County



Copy and paste in caption:

NO DUMPING! Help us fight against illicit discharge! Find ways to volunteer here: <http://rocklandcce.org/stormwater-consortium-water-quality-education/environmental-volunteer-opportunities>

#stormwater #water #drainage
#stormwatermanagement
#plumbing #wastewater
#sustainability #pollution
#cleanwater #waterquality
#watertreatment
#greeninfrastructure
#climatechange #blockedrain
#drainer #sewer #environment
#watermanagement
#waterpollution

Are you ILLEGALLY applying Fertilizer in Rockland County?

Per the Rockland County Lawn Fertilizer

Act, no person shall apply Fertilizer:

- From December 1st and April 1st
- To any Impervious surface (parking lots, roadways, sidewalks)
- To any lawn or turf within 50 feet of any surface water except where a continuous, 10-foot minimum natural vegetative buffer separates the lawn or turf area and the surface water.
- Containing Phosphorus or such compounds (phosphate), except on Turf or Lawn areas **that have been soil tested and that confirm the need for additional phosphorus**. The amount applied shall not exceed the amount and rate recommended from the soil test. **Soil tests are available at Cornell Cooperative Extension, Rockland County.**



Cornell Cooperative Extension of Rockland County

Copy and paste in caption

You can also take the Fertilizer Law Class offered the first Wednesday of each month through Cornell Cooperative Extension Rockland. See more info at RocklandCCE.org/FertLaw

#stormwater #water #drainage
#stormwatermanagement #plumbing
#wastewater #sustainability #pollution
#cleanwater #waterquality
#greeninfrastructure #climatechange
#sewer #environment

Did you know that almost 20%
of bacteria in your waterways
comes from pet waste?

Here are some tips:

- Keep a supply of bags near your dog leash; tie bags on the leash if you don't have a pocket or pack
- Reuse old bags
- Purchase special bags where pet supplies are sold
- Long-handled "pooper scoopers" available at pet stores make it easy to pick up after your dog without stooping over
- Never put pet waste into a storm sewer– it will go directly into a stream

Cornell Cooperative Extension of Rockland County



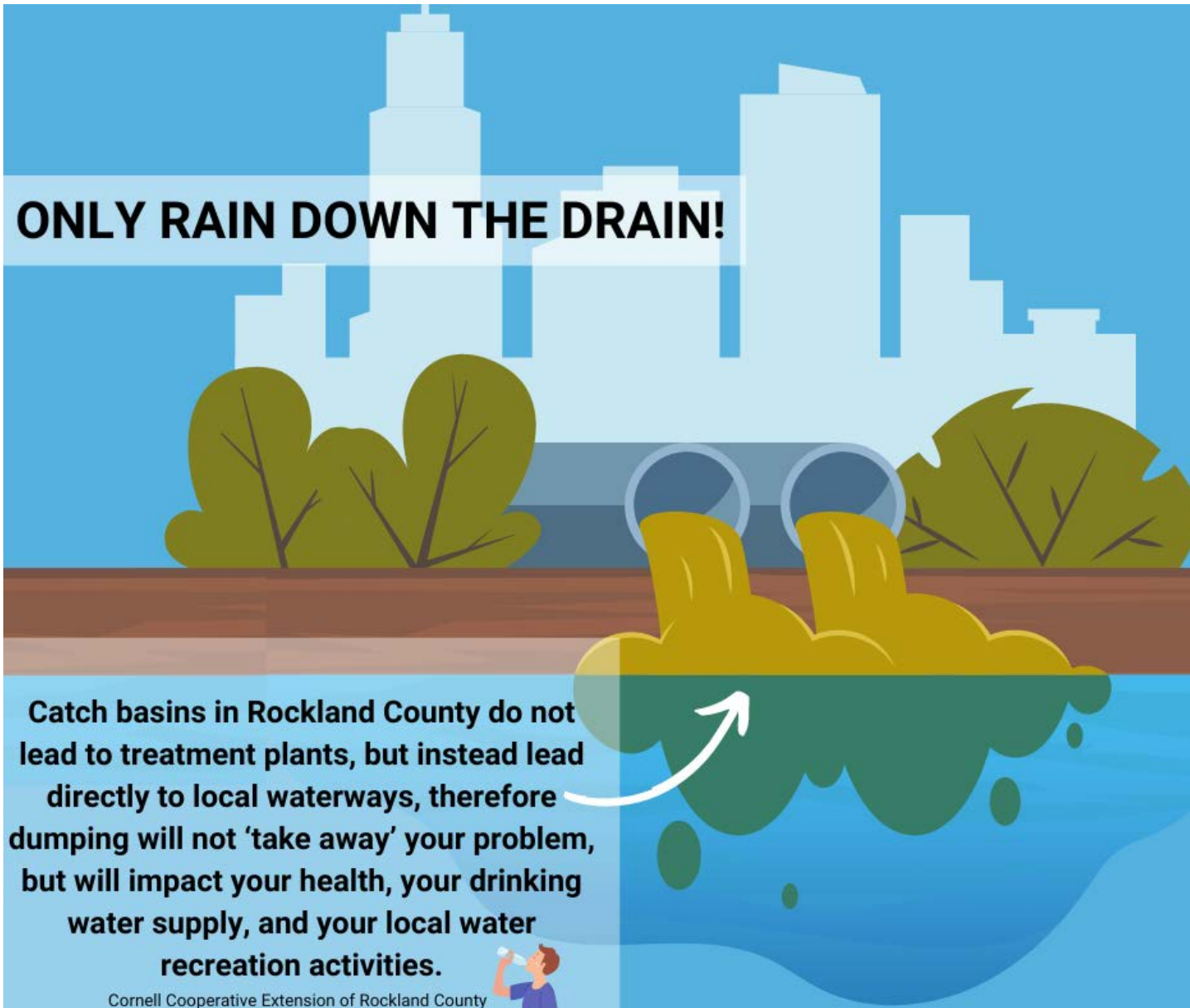
Copy and paste in the caption:

Always pick up after your pet.

Learn more about about keeping our
waterways clean

at: <http://rocklandcce.org/stormwater-consortium-water-quality-education>

#stormwater #water #drainage
#stormwatermanagement #wastewater
#sustainability #pollution #cleanwater
#waterquality #watertreatment
#greeninfrastructure #climatechange
#blockeddrain #drainer #sewer
#environment #watermanagement
#waterpollution



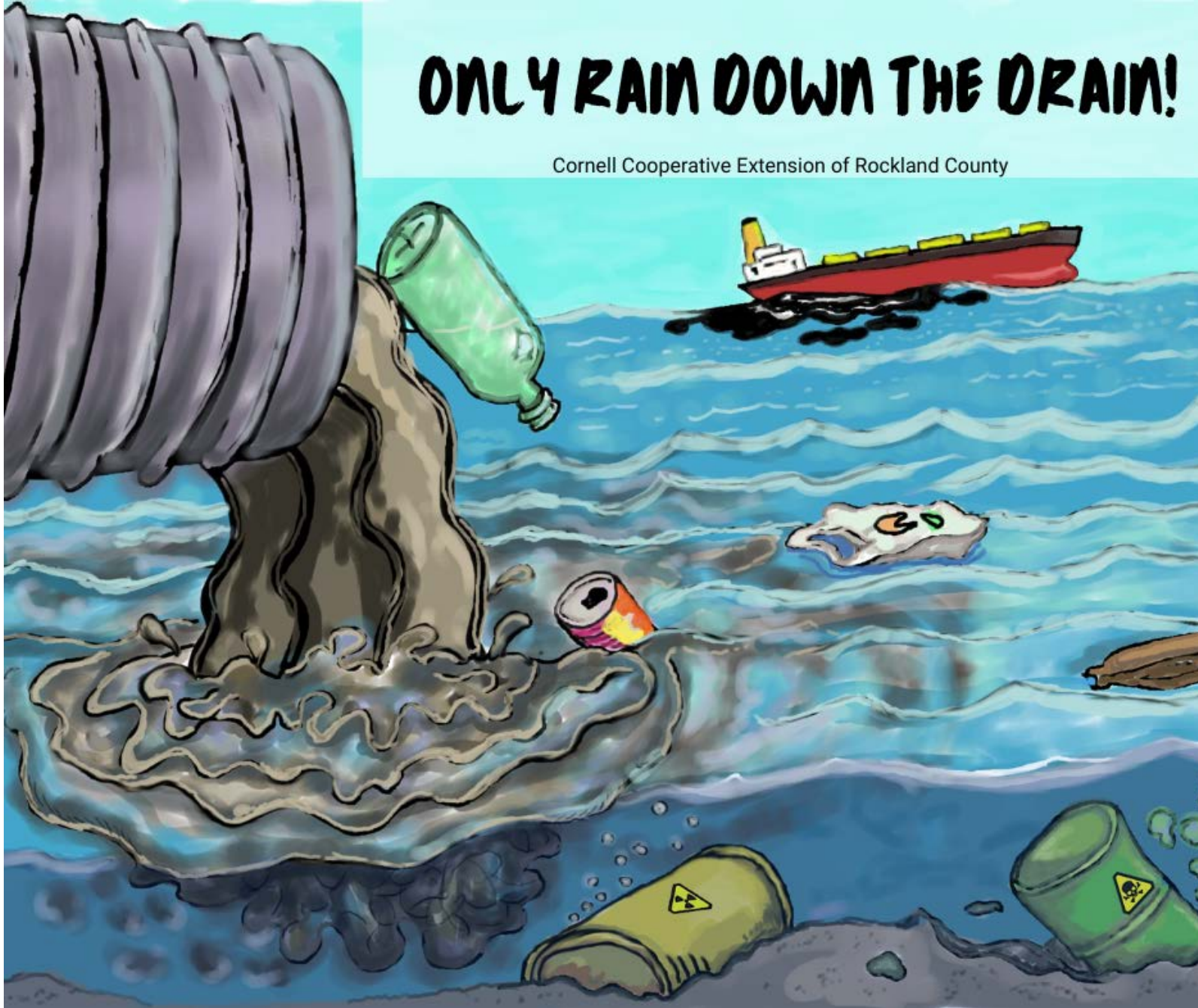
Copy and paste in the caption:

Call Rockland County Department of Environmental Resources at (845) 364-2670 to pick up storm drain markers and adhesive for your community.

#stormwater #water #drainage
#stormwatermanagement #wastewater
#sustainability #pollution #cleanwater
#waterquality #watertreatment
#greeninfrastructure #climatechange
#blockeddrain #drainer #sewer #environment
#watermanagement #waterpollution

ONLY RAIN DOWN THE DRAIN!

Cornell Cooperative Extension of Rockland County



Copy and paste in the caption:

Only rain should be going down the drain!

Get more involved:

<http://rocklandcce.org/stormwater-consortium-water-quality-education/environmental-volunteer-opportunities>

#stormwater #water #drainage
#stormwatermanagement #plumbing
#wastewater #sustainability #pollution
#cleanwater #waterquality
#watertreatment #greeninfrastructure
#climatechange #blockeddrain #drainer
#sewer #environment
#watermanagement #waterpollution

**Polluted stormwater runoff is a major
source of contamination in the Nation's
waterbodies that ultimately pollutes our
drinking water sources.**

KEEP YOUR STORMDRAINS CLEAN!



Cornell Cooperative Extension of Rockland County

Copy and paste in the caption:

Keeping our sewer drains clear and clean
is crucial in our efforts to improve our
drinking water.

[http://rocklandcce.org/stormwater-
consortium-water-quality-education](http://rocklandcce.org/stormwater-consortium-water-quality-education)

#stormwater #water #drainage
#stormwatermanagement #plumbing
#wastewater #sustainability #pollution
#cleanwater #waterquality
#watertreatment #greeninfrastructure
#climatechange #blockeddrain #drainer
#sewer #environment
#watermanagement #waterpollution

Halt The Salt!

Winter is here, which means tons of salt will be used to make our roads and sidewalks safe.

However, when the ice and snow melt, can make its way into our creeks, lakes, and drinking water supplies.

Though we can't stop using salt for safety reasons, here are some tips to reduce the amount of salt used:

1. Spread a small amount prior to a storm to help prevent ice build-up.
2. Wet your salt before applying, it will then stick where you want it.
3. Use a commercial mix of Sodium and Calcium Chloride; it's more environmentally friendly.




Cornell Cooperative Extension of Rockland County

Copy and paste in the caption:

HALT THE SALT... Check out @CCERockland short video on halting the salt
<https://www.youtube.com/watch?v=crU7teu8jnY>

#stormwater #water #drainage
#stormwatermanagement #pollution
#cleanwater #waterquality #watertreatment
#greeninfrastructure #climatechange
#sewer #environment #haltthesalt



Microplastics have been detected in water around the world, including our streams, rivers, lakes and oceans. In these waterways, the microplastics end up in the water we drink and the fish we eat, including shellfish. Help keep our waterways clear by recycling!



Cornell Cooperative Extension of Rockland County

Copy and paste in the caption:

Or try a reusable water bottle! Help reduce our plastic pollution.

Get more involved:

<http://rocklandcce.org/stormwater-consortium-water-quality-education/environmental-volunteer-opportunities>

#stormwater #water
#stormwatermanagement
#wastewater #sustainability
#pollution #cleanwater
#waterquality #watertreatment
#greeninfrastructure
#climatechange #sewer
#environment #watermanagement
#waterpollution



**Visit:
RocklandCCE.org/volunteering
and find out how
you can get involved!**



Copy and paste in caption:

Help keep your community and
waterways clean.

#stormwater #water #drainage
#stormwatermanagement
#plumbing #wastewater
#sustainability #pollution
#cleanwater #waterquality
#watertreatment
#greeninfrastructure
#climatechange #blockedrain
#drainer #sewer #environment
#watermanagement
#waterpollution

How do we contribute to Harmful Algae Blooms (HABs)?

Cornell Cooperative Extension Rockland County



Multiple **Harmful Algae Blooms (HABs)** have been confirmed in Rockland since 2012. HABs occur most often in waters **high in Nutrients (nitrogen and phosphorus)**. Many of our outdoor activities send excess nutrients to local waterways.

Car-Wash Soap contains phosphorus so please wash your car on the grass! The lawn will filter out the phosphorus.

Fertilizer is high in nutrients, and must remain on the lawn. Fertilizer is a significant contributor to algal blooms. Do not direct fertilizer to storm drains, over-apply it, apply it prior to rain, or counter to Rockland law.

Leaves & Grass Clippings, pet waste and sediment will clog storm drains and send nutrients to local waterways.

Copy and paste in caption:

Visit

<http://rocklandcce.org/stormwater-consortium-water-quality-education/our-lawns-and-algae-harmful-algae-blooms>

for more information on how to prevent HABs in your area.